

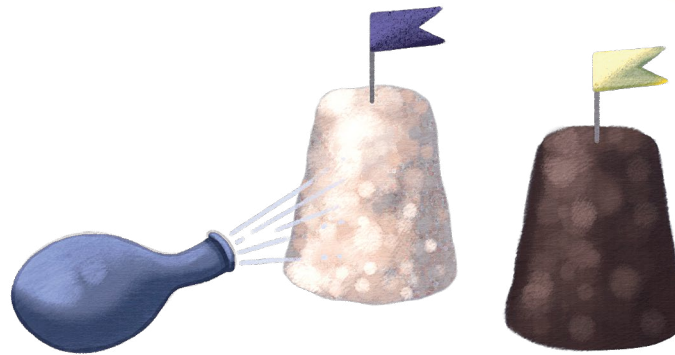
Water is only one weathering agent—the wind is another. This experiment shows how the wind erodes different types of soil.

## WHAT YOU NEED:

- Newspaper
- Two plastic disposable cups
- Play sand (from a sandbox)
- Garden soil
- Party balloon

## WHAT YOU DO:

1. Cover your work surface with newspaper.
2. Fill one cup with play sand and the other with garden soil.
3. Add just enough water to the cup with sand to make it stand on its own. Press down the sand like you're making a sand castle. Turn the cup quickly on its end and remove the cup slowly so the structure stands on its own.
4. Add just a little water to the cup with dirt. It will take less water than the sand. (You don't want to make a mud pile!) Press down the dirt; then turn over the cup to make a dirt castle.
5. Allow your "castles" to dry for one hour.
6. For the wind, blow up a party balloon, but don't tie it. Point the balloon at each castle and let the air out. Which type of soil stands up better to the wind?
7. Try letting out the air at different distances. How does this affect the erosion of either castle?



TRY THIS!  
**BALLOON WIND EROSION**

TRY THIS!